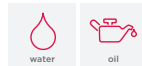
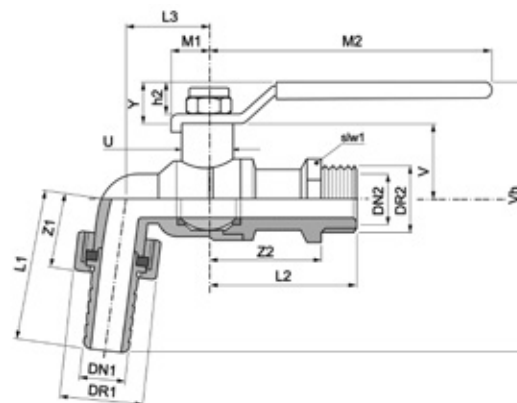


PB50HU Ball valve



specification

- hose union connection
- water and oil service
- fixed to stand wall plate elbows
- 1/2" and 3/4" sizes
- brass body
- ISO 228-1
- ANSI American taper thread
- chrome finish



DN	Connection	Code	Total (kg)
DN15 HU	1/2"	262001	0.28
DN20 HU	3/4"	262002	0.34
DN15 HU AT	1/2"	262004	0.27

Dimensions (mm) HU

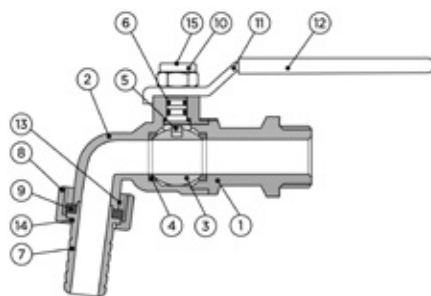
	Dr1	Dr2	DN1/DN2	h2	L1	L2	L3	M1	M2	slw1	U	V	Vh	Y	Z1	Z2
1/2"	20.0	30.0	DN15	12.0	37.0	52.0	37.0	100.0	11.0	25.0	17.0	28.0	97.0	16.0	12.0	40.0
3/4"	37.0	25.0	DN19	12.0	40.0	52.0	37.0	100.0	11.0	28.0	17.0	28.0	100.0	16.0	12.0	40.0
1/2"	20.0	30.0	DN15	12.0	37.0	52.0	37.0	100.0	12.0	25.0	17.0	28.0	97.0	16.0	12.0	40.0

Material specification

Nr	Component	Material
1	Body	Brass
2	Cap	Brass
3	Ball	Brass
4	Ball seal	PTFE
5	Spindle	Brass
6	Spindle seal	NBR
7	Hose pipe	MS58 brass
8	Hose nut	MS58 brass
9	Hose union "O" ring	NBR
10	Lever nut	Brass
11	Lever handle	A3 steel
12	Lever grip	PVC
13	Gland nut	Brass
14	Flow straightener	Polyethylene
15	Lever securing screw, chrome plated	Brass

Maximum pressure conditions

Size	Max Pressure (bar)	Min/Max Temperature (°C)	Test Pressure Shell (bar)	Test Pressure Seat (bar)	Max Pressure (psi)	Min/Max Temperature (°F)	Test Pressure Shell (psi)	Test Pressure Seat (psi)
1/2" to 3/4"	16.0	0°C + 100°C	37.5	27.5	362.6	32°F + 212°F	543.9	398.9



Pressure equipment directive category

All sizes classified SEP

Pressure & temperature ratings

